

**CertainTeed**  
SAINT-GOBAIN

# NORTHGATE<sup>®</sup>

DESIGNER ROOFING SHINGLES

*Shown in Max Def Moire Black*



Shown in Max Def Moire Black

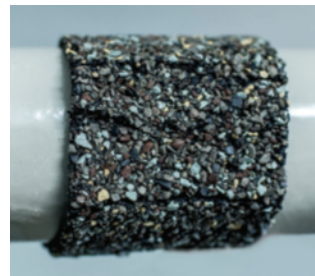
# Bend But Never Break

CertainTeed's new NorthGate SBS modified asphalt shingle is unmatched by other standard asphalt shingles. The rubberizing aspect of SBS allows greater flexibility so the shingles resist cracking even in extreme cold-weather, allowing for year round application. SBS also offers superior granule adhesion which is one of the key components in protecting the shingle against the elements.

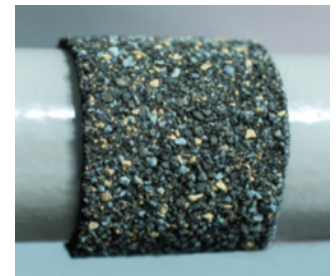
NorthGate has received UL 2218 Class 4 Impact Resistance classification, the highest rating possible.

Because of its uncompromised strength, NorthGate offers one of the industry's most comprehensive warranties.

Compare the pliability difference of NorthGate and a non-SBS modified product at 0°F.



non-modified asphalt shingle with cracking



SBS - modified asphalt shingle with no cracking

### Improvement of SBS-modified vs. Standard Asphalt Shingles

Physical Property	Improvement
Tear Strength	40%
Granule Loss	15%
Nail Pull Resistance	40%
Cold Flexibility (0°F)	Passes



SBS provides better adhesion to hold the surface granules better and allows the shingles to endure extreme weather longer.



SBS modified shingles resist cracking and shrinking in both hot and cold weather climates.

## FEATURES & BENEFITS

- Greater cold-weather flexibility and impact-resistance
- Increased ductile properties and granule adhesion
- Enhanced crack resistance
- Better weatherability
- Shrink resistance

## SPECIFICATIONS

- Two-piece laminated fiber glass-based construction
- Classic shades and dimensional appearance of natural wood or slate
- 270 lbs. per square

*For U.S. building code compliance, see product specification sheets.*

CertainTeed products are tested to ensure the highest quality and comply with the following industry standards:

### Fire Resistance:

- UL Class A
- UL certified to meet ASTM D3018 Type 1

### Wind Resistance:

- UL certified to meet ASTM D3018 Type 1
- ASTM D3161 Class F
- ASTM D7158 Class H

### Tear Resistance:

- UL certified to meet ASTM D3462
- CSA standard A123.5


### Impact Resistance:

- UL Certified to meet UL 2218 Class 4

### Quality Standards:

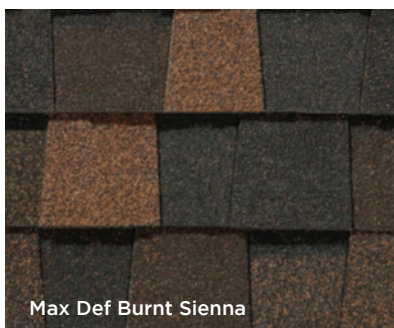
- ICC-ES-ESR-1389 & ESR-3537

## WARRANTY

- Lifetime limited transferable warranty against manufacturing defects on residential applications
- 50-year limited transferable warranty against manufacturing defects on group-owned or commercial applications
- 15-year StreakFighter® algae-resistance warranty 
- 10-year SureStart™ protection
- 15-year 110 mph wind-resistance warranty
- Wind warranty upgrade to 130 mph available. CertainTeed starter and CertainTeed hip and ridge required

*See actual warranty for specific details and limitations.*

# NORTHGATE® COLOR PALETTE



**Max Def Colors** - Look deeper. With Max Def, a new dimension is added to shingles with a richer mixture of surface granules. You get a brighter, more vibrant, more dramatic appearance and depth of color. And the natural beauty of your roof shines through.

# RESIDENTIAL ROOFING



The best formula under one roof.

We start with the highest-quality raw materials and add state-of-the-art technology to monitor our manufacturing process and test our finished products. The result is superior performance from beginning to end.



NorthGate®  
available in  
areas shown



learn more at: [certainteed.com/roofing](http://certainteed.com/roofing)



**CertainTeed Corporation**

20 Moores Road  
Malvern, PA 19355  
[www.certainteed.com](http://www.certainteed.com)

**ASK ABOUT ALL OF OUR OTHER CERTAINTEED® PRODUCTS AND SYSTEMS:**

ROOFING • SIDING • TRIM • DECKING • RAILING • FENCE  
GYPSUM • CEILINGS • INSULATION

Professional: 800-233-8990 Consumer: 800-782-8777